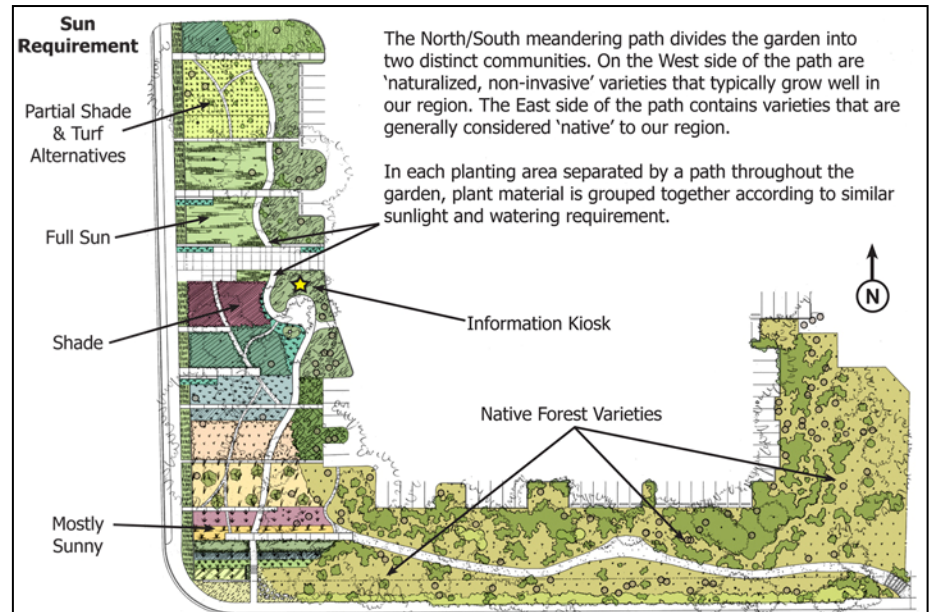


TVWD's Water Efficient Demonstration Garden is an interactive educational tool to promote efficient use of water in the landscape. The District is currently remodeling the two acre garden to provide an even better example of how using water-efficient landscaping and irrigation techniques can result in a beautiful landscape while minimizing excess water used for irrigation.

Highlights of the new and improved garden include:

- Provides examples of attractive, durable and practical water conservation devices and sustainable landscape practices such as weather-based irrigation, drip irrigation and composted soil amendments
- Demonstrates voluntary conservation practices that can provide long-term cost savings, reduced maintenance requirements and improved landscape health

Demonstration Garden Schematic Design



- The design arranges plants into communities of similar water, light and maintenance requirements incorporates both native and naturalized non-invasive species
- Serves as an 'outdoor classroom' to facilitate District sponsored workshops and educational opportunities
- Allows visitors to move about readily and accessibly in order to see, smell and touch a wide variety of native plants, shrubs, trees, and other landscape elements
- Enhanced for local wildlife habitat

Visit our new and improved Demonstration Garden at 1850 SW 170th Ave. in Beaverton. It's located on the corner of 170th Ave. and Merlo Rd., just south of the Elmonica MAX station.

Watch our Web site for dates and times of Demonstration Garden events!

For more information about the Demonstration Garden, call 503-642-1511 or visit www.tvwd.org.